

# Hotel Lighting Catalogue

A set of three horizontal lines on the left side of the page: a thick grey line at the top, a medium grey line in the middle, and a thin white line at the bottom.

## *China Lamps*

A set of two vertical lines on the left side of the page: a thin white line on the left and a thick orange line on the right.

*Your Lighting Style*

A set of three horizontal lines on the right side of the page: a thin white line at the top, a medium orange line in the middle, and a thick orange line at the bottom.



Contact Us

---

# *China Lamps*

*Your Lighting Style*

Add.:Jijia Industrial Zone,Xiegang,Dongguan,Guangdong,China

Email:

[jenny@chinalampsltd.com](mailto:jenny@chinalampsltd.com)

[sanny@chinalampsltd.com](mailto:sanny@chinalampsltd.com)

[rebecca@chinalampsltd.com](mailto:rebecca@chinalampsltd.com)

[jack@chinalampsltd.com](mailto:jack@chinalampsltd.com)



# Factory Introduction:

*China Lamps*  
Your Lighting Style

China Lamps is established in 2009 and located in Guangdong Province. The factory is more than 3000 square meters with 40 workers and 2 production lines. We are a manufacturer and exporter of hotel projects such as table lamps, floor lamps, wall lamps, pendant lamps, etc. Our products are UL, CE, RoHS certified and supplied to Hilton, Fairmont, Four Seasons, Hyatt Place, Super 8 hotels. Warm welcome to visit us!



# Factory show ----Welcome!





# Certificates:

## UL

## CE

## RoHS

**China Lamps**  
Your Lighting Style

**CERTIFICATE OF COMPLIANCE**

Certificate Number: 20160707-E49527  
Report Reference: E485250-20160630  
Issue Date: 2016-JULY-07

Issued to: CHINA LAMPS MANUFACTURER LIMITED  
Unit A/Rm303/F, Cheong Sun Tower, 116-118 Wing Lok Street, Sheung Wan, HK HONG KONG

This is to certify that representative samples of LUMINAIRES, PORTABLE Portable Electric Luminaires, Temperature Test Exempt Units.

Have been investigated by UL in accordance with the Standard(s) indicated on this Certificate.

Standard(s) for Safety: UL 153, Portable Electric Luminaires  
CAN/CSA C22.2 No. 12-1992, Portable Luminaires

Additional Information: See the UL Online Certifications Directory at [www.ul.com/3database](http://www.ul.com/3database) for additional information.

Only those products bearing the UL Certification Mark should be considered as being covered by UL's Certifications and Follow-Up Service.

Look for the UL Certification Mark on the product.



Shenzhen CCS Compliance Testing Laboratory Ltd.  
1/F, Xigang Industrial Park, Tongda Road, Bao'an Avenue, Bao'an District, Shenzhen, Guangdong, China  
Tel: (86)755-23943333  
Http://www.LCS-cert.com

Page 1 of 1

**CERTIFICATE of Conformity**

Reference No.: LC016051200601

Applicant: China Lamps Manufacturer Limited

Address: Qiyang Industrial Zone, Xigang Town, Dongguan City, Guangdong, China

Product: lamps

Models: 1026FD, 1026TG, 1030FD, 1030FG, 1030FO, 1032FD, 1032FG, 1032FO, LAR1, LAR2, LAR3, LAR4, LAR5, LAR6, 385-186, 385-230, 385-201, 385-230, 5207, 5209, 5246, 5251, 5252, 5253, 5254, CLM-001, CLM-002, CLM-003, CLM-004, CLM-005, CLM-010

Trade Mark: N/A

The submitted products have been tested by us with the listed standards and found in compliance with the following European Directives:

The EMC Directive 2014/53/EU

EN 60598-2-1:2015, EN 61547:2009  
EN 61000-3-2:2014, EN 61000-3-3:2013

The tests were performed in normal operation mode. The test results apply only to the particular samples tested and to the specific tests carried out. This certificate applies specifically to the samples investigated in our test reference number only.

The CE markings as shown below can be affixed on the product after completion of necessary technical documentation.

Other relevant Directives have to be obtained.



  
August 15, 2016

Shenzhen CCS Compliance Testing Laboratory Ltd.  
1/F, Xigang Industrial Park, Tongda Road, Bao'an Avenue, Bao'an District, Shenzhen, Guangdong, China  
Tel: (86)755-23943333  
Http://www.LCS-cert.com

Fax: (86)755-23943333  
Email: [webmaster@LCS-cert.com](mailto:webmaster@LCS-cert.com)

**CERTIFICATE of Conformity**

Reference No.: LC016081210008

When tested as specified, the submitted lamps comply with the requirements of Commission Decision of 21 July 2011 amending Directive 2011/65/EU

Applicant: China Lamps Manufacturer Limited

Address: Qiyang Industrial Zone, Xigang Town, Dongguan City, Guangdong, China

Product: lamps

Models: 1026FD, 1026TG, 1030FD, 1030FG, 1030FO, 1032FD, 1032FG, 1032FO, LAR1, LAR2, LAR3, LAR4, LAR5, LAR6, 385-186, 385-230, 385-201, 385-230, 5207, 5209, 5246, 5251, 5252, 5253, 5254, CLM-001, CLM-002, CLM-003, CLM-004, CLM-005, CLM-010

The test report is issued by the Company subject to its General Conditions of Service printed on back cover. Attention is drawn to the limitation of liability, non-refundation and a provisional issue defined therein. The results shown in this test report refer only to the samples tested unless otherwise stated. This Test Report cannot be reproduced, except in full, without prior written permission of the Company.

Other relevant Directives have to be obtained.

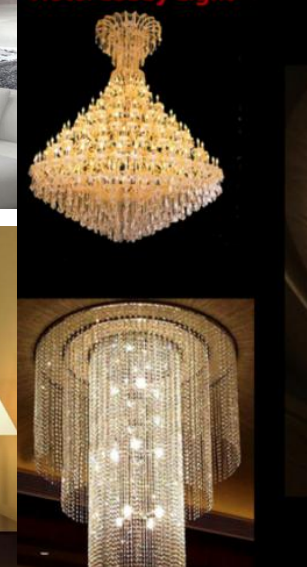
**RoHS**

  
August 15, 2016

Shenzhen CCS Compliance Testing Laboratory Ltd.  
1/F, Xigang Industrial Park, Tongda Road, Bao'an Avenue, Bao'an District, Shenzhen, Guangdong, China  
Tel: (86)755-23943333  
Http://www.LCS-cert.com

Fax: (86)755-23943333  
Email: [webmaster@LCS-cert.com](mailto:webmaster@LCS-cert.com)

# Hotel Project Show





# Project:

*China Lamps*  
Your Lighting Style





Made By CHINA LAMPS  
10th, Nov, 2012





**OUR PARTNER:**



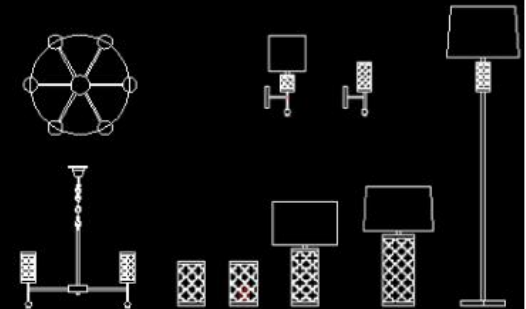
# Our Team

Contact

Our Team



**10+ Years Experience**  
**300+ Hotel Solution**  
**4000+ Square Meter Factory**  
**Welcome For Customization!**



# Hotel lamp set

---

## Set:CLM 01

## Set:CLM 02

CLM801



CLM804



CLM873



CLM806



CLM874



CLM876



CLM802



CLM805



CLM876





**Set:CLM03**

**Set:CLM04**

CLM814



CLM845



CLM815



CLM951



CLM949



CLM952



CLM951



CLM42



CLM41





**Set:CLM05**

**Set:CLM06**



CLM031



CLM231



CLM032



CLM080



CLM081



CLM084



CLM035



CLM033



CLM034



CLM082



CLM083

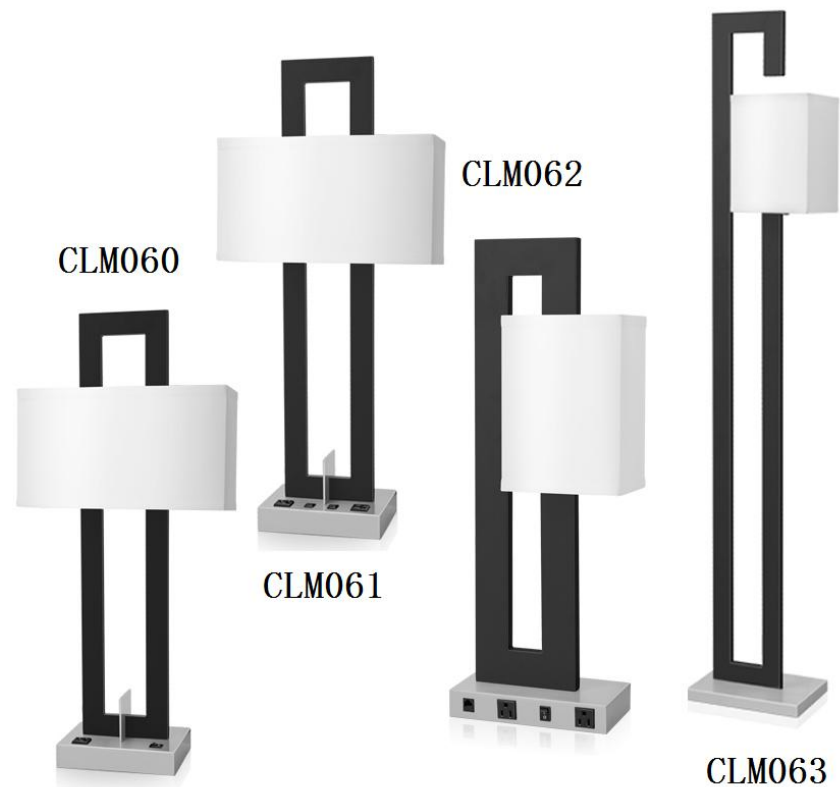


CLM036



# Set:CLM07

# Set:CLM08





**Set:CLM09**

**Set:CLM10**



**CLM070**



**CLM071**



**CLM072**



**CLM073**



**CLM040**



**CLM041**



**CLM042**



**CLM046**



**CLM043**



**CLM045**



**CLM044**







**Set:CLM11**

**Set:CLM12**



**CLM090**



**CLM091**



**CLM092**



**CLM091**



**CLM092**



**CLM093**



## Set:CLM13

## Set:CLM14



CLM222



CLM223



CLM224



CLM225



CLM232



CLM231



CLM226



CLM227



CLM229



CLM230



CLM229



CLM228



CLM228



CLM230



CLM230



CLM229



CLM228



CLM227



**Set:CLM15**

**Set:CLM16**



CLM32



CLM33



CLM37



CLM38



CLM40



CLM34



CLM35



CLM36



CLM39



CLM40



**Set:CLM17**



CLM50

CLM54



CLM51



CLM52



**Set:CLM18**



CLMM1

CLMM6

CLMM2

CLMM3

CLMM4

CLMM5

# Hotel Wall Lamp

---



CLMV03  
32 W x 4 D x 5 H"



CLMV05  
25"W x 4"D x 5"H



CLMV15  
42.5" W x 3.5" D x 4.75" H



CLMV33  
W 8.5" / D 39" / H 7.25"



CLMHS19  
W 19.5" / D 19.5" / H 5"



CLMHS98  
3.5 "x 11 "x 0.63"



CLM61



CLM62



CLM63



CLM64



CLM65



CLM66



CLM67



CLM69



CLMV29  
14"\*32"\*96"



CLMV36  
W 13" / D 4.4" / H 5"



CLMV45  
W 22" / D 8" / H 8"



CLMV47  
W 25.75" / D 9" / H 9.25"



CLMHS17  
W 14" / H 8.88"



CLMHS75  
8.75" W 4" D x 11.75" H



CLM71



CLM70



CLM69



CLM68



CLM67



CLM66



CLM65



# LED Wall Lamp

---



CLME12



CLME10



CLME8



CLME13



CLME15



CLME16



# Hotel Table Lamp

---



CLMJT24



CLMJT57



CLMJT90



CLMJT43



CLMJT39



CLMJT27

# Hotel Ceiling Lamp

---



CLM55



CLM56



CLM57



CLM58



CLM59



CLM60

# Hotel Mirror Lamp



CLMM1



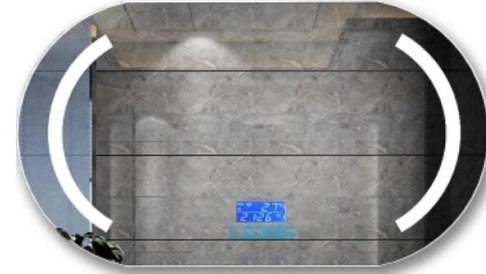
CLMM2



CLMM3



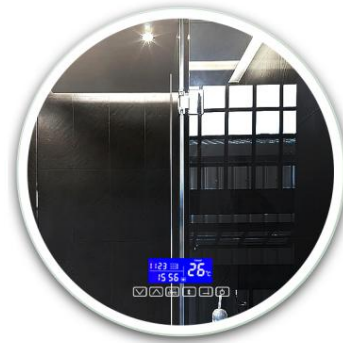
CLMM10



CLMM11



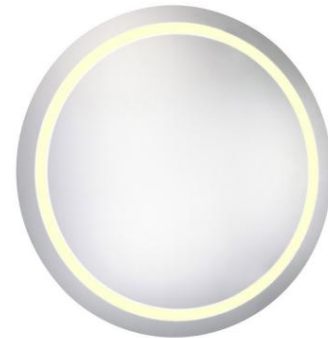
CLMM7



CLMM4



CLMM5



CLMM6



CLMM8

# Hotel Floor Lamp



CLM5229  
Metal Floor Lamp  
Size:14"W\*19.5"D\*64"H



CLM5230  
Metal Floor Lamp  
Size:20"W\*32"D\*73"Ht



CLM5231  
Metal Floor Lamp  
Size:11"W\*17"D\*64"H



CLM5232  
Metal Floor Lamp  
Size:17"W\*19"D\*65"H



CLM5225  
Metal Floor Lamp  
Size:10"W\*70"H



CLM5226  
Metal Floor Lamp  
Size:20"W\*28"D\*66.5"H



CLM5227  
Metal Floor Lamp  
Size:20"D\*65"H



CLM5228  
Metal Floor Lamp  
Size:12"D\*68"H



CLM5233  
Metal Floor Lamp  
Size:18"W\*18"D\*59"H



CLM5234  
Metal Floor Lamp  
Size:17.75"W\*8"D\*62"H



CLM5235  
Metal Floor Lamp  
Size:12"W\*18"D\*68"H



CLM5236  
Metal Floor Lamp  
Size:16"W\*70.5"H



CLM5237  
Metal Floor Lamp  
Size:15"W\*20.5"D\*65"H



CLM5238  
Metal Floor Lamp  
Size:55.5"H\*14.5"W\*19" D



CLM5239  
Metal Floor Lamp  
Size:49.5"H\*14"W\*25"D



CLM5240  
Wood Floor Lamp  
Size:18"D\*68"H



EMBASSY SUITES  
HOTELS®

# EMBASSY SUITES





# Hampton Inn

## CAREFREE





# Hampton Inn

## CASUAL







# Hampton Inn

CONFIDENT





# Hampton Inn

## FOREVER YOUNG





# Holiday Inn

## FORMULA BLUE





# Fairfield Inn

## PERSPECTIVE





# Marriott Courtyard CYNERGY





# Town Place Suites

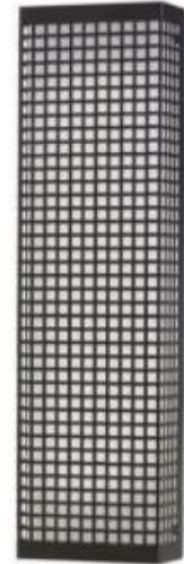
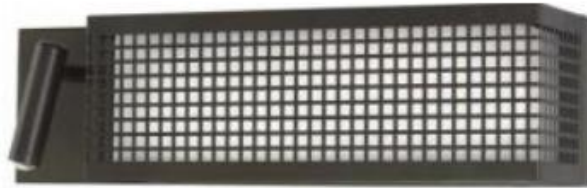
## TURNING POINT





# SpringHill Suites

## GEN 6





# La Quinta Inn DEL SOL







# Homewood Suites





# Comfort Inn & Suites

## TRULY YOURS



Desk Lamp with USB and Polished Chrome Finish



Single Table Lamp



Twin Table Lamp



End Table Lamp



Single Wall Lamp



Double Wall Lamp



Desk Lamp



Bronze Bath Sconce



Dark Bronze 12in Ceiling Light



Dark Bronze 12in Wall Sconce



Dark Bronze 38in Vanity Fixture



Floor Lamp



Dark Bronze 3 Light Vanity Fixture



# Super 8 INNOV8TE





CANDLEWOOD

SUITES

# Candlewood Suites

## NEST & HARBOR





---

Kindly tell us your **favor** and **quantity**,  
we will quote for you soon!

**Custom is always welcome!**

Add.:Jijia Industrial Zone,Xiegang,Dongguan,Guangdong,China

Email:

[jenny@chinalampsltd.com](mailto:jenny@chinalampsltd.com)

[sanny@chinalampsltd.com](mailto:sanny@chinalampsltd.com)

[rebecca@chinalampsltd.com](mailto:rebecca@chinalampsltd.com)

[jack@chinalampsltd.com](mailto:jack@chinalampsltd.com)

Mob:+8615920231777 Whatsapps:+8615920231777

Wechat: gdnfbk QQ:103930013

Website: [www.chinalampsltd.com](http://www.chinalampsltd.com)

---